



..... 2

..... 2

..... 3

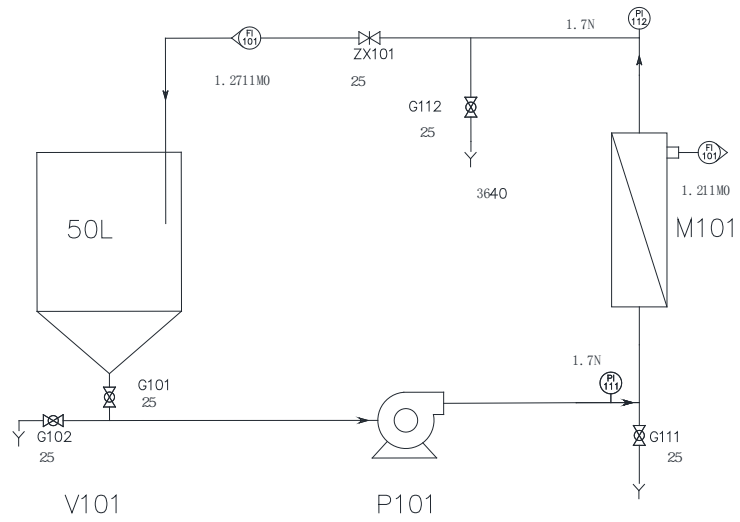
..... 4

..... 5

..... !

..... 7

81C



	21 2	21 2	N21 2		
2					
	21 2		H21 2	21 2	H21 3
H21 4 H21 5				21 2	
3					
	21 2		H21 2	21 2	H21 3
H21 4 H21 5				21 2	21 2
					21 2
4					

2/

-

3/

. 21M

,LTD

BCC

2212 2C 0 0NDE 263

111/11

13%

2

2

3

3651

N313. 3651G		1/4	EG	HF
N312. 3651G		1/15		HF
G 13. 3651G		211111	EG	
G 12. 3651G		31111	F	
G318. 3651G		31111	B	HF
G317. 3651G		21111	F	HF
G316. 3651G		111	GN	HF
G315. 3651G		6111	F	HF
G314. 3651G		4611	GN	HF
G313. 3651G		3611	GN	HF
G312. 3651G		2111	GN	HF
E313. 3651G		261. 311	GN	HF
E312. 3651G		411. 611	GN	HF
B212. 3651G		F H	B	HF

